



CRQ03

2011-13 Dodge Durango**Qi Center Console Direct Fit Bezel****PARTS INCLUDED**

1. (1) Direct Fit Bezel w/ MQUSM
2. (1) Vehicle Specific T-harness
3. (2) MAGICPLATE™
4. (2) MAGICPLATE™ Applicator
5. (6) Double-sided Adhesive

**READ INSTRUCTIONS COMPLETELY BEFORE INSTALLING THIS MOUNT KIT.**

WARNING: Do not use the magnetic mount with any hard-drive based devices such as: iPod classic, iPod Video and Zune MP3 players. Use caution whenever removing or handling plastic parts of any vehicle. Unnecessary force or pressure can cause pieces to crack or break. Please use a plastic card to remove the metal plates. Remove adhesive residue with a non-abrasive cleaner.

CAUTION: This magnetic device is not a toy. The small magnets are harmful if swallowed. Keep away from children.

PRELIMINARY INTRODUCTION

Wirelessly charge your Qi-enabled smartphone without the need to plug your device into a car charger or USB cable. Quickly charge your device at 5W or 10W charging. The high powered neodymium magnets are 100% safe and will not damage your device. The CRQ03 works with Qi-enabled smartphones from these manufacturers: Apple, Samsung, Google, Microsoft, LG, HTC, Motorola. Also works with Qi-enabled cases, receivers, and battery covers.

CAUTION: Disconnect your vehicles negative battery terminal before the installation to help prevent electrical damage. We recommend the use of a volt/ ohm meter over a test light to check wiring. A test or grounded wire probe can cause damage to the vehicle's computer and/or diagnostic system. Avoid all factory airbag wiring - airbags can accidentally deploy causing serious injury or death. **NOTE:** See your vehicle's instructions for any special tools your installation might require.

IMPORTANT! DO NOT RETURN PRODUCT TO THE RETAILER. If you need assistance or replacement parts contact us at: 1-800-363-4490 X1 | www.scosche.com/contact. Our office hours are: Mon-Fri: 8AM-5:30PM (PST) and Sat: 8AM-2PM (PST)

LIABILITY DISCLAIMER

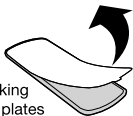
This instruction booklet is based on carefully documented data and research of automobile disassembly, wire harness and information pertaining to the installation of this kit. Scosche Industries, Inc. cannot be held responsible for discrepancies/inconsistencies that may occur due to the automobile manufacturing changes or options, or damages that may occur in the automobile during the installation of components while using this booklet.

MAGICPLATE™ MOUNTING OPTION 1

NOTE: For mounting directly to device, use the large single plate with template guide as shown in the instructions below.

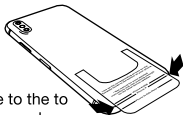
1

Remove the white paper backing from both plates



2

Line up the corresponding arrows on the Template Guide to the to the bottom of your phone.



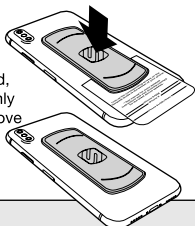
REMOVING THE PLATE

Use a thin plastic card to carefully lift the plate's adhesive surface from the mounting surface. Slowly lift up and remove the plate.

Do not use any heat or liquids to remove the plate, due to risk of damaging your phone. Contact Scosche Customer Service for any additional assistance at 800.363.4490 Ext. 1 or customerservice@scosche.com

3

When positioned, press plates firmly to affix and remove template.

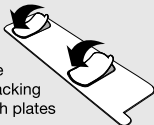


MAGICPLATE™ MOUNTING OPTION 2

NOTE: For mounting directly to CASE, use the (2) small plates with the integrated template guide as shown below.

1

Remove the white paper backing from both plates



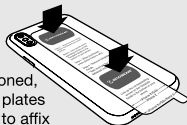
2

Line up the corresponding arrows on the Template Guide to the to the bottom of your phone.



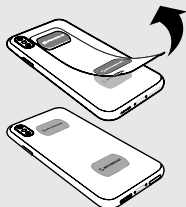
3

When positioned, press plates firmly to affix



4

When positioned, press plates firmly to affix



REMOVING THE PLATE

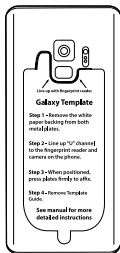
Use a thin plastic card to carefully lift the plate's adhesive surface from the mounting surface. Slowly lift up and remove the plate.

Do not use any heat or liquids to remove the plate, due to risk of damaging your phone. Contact Scosche Customer Service for any additional assistance at 800.363.4490 Ext. 1 or customerservice@scosche.com

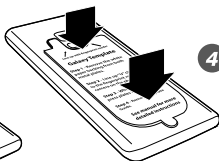
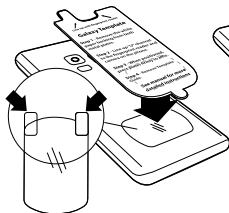
MAGICPLATE™ MOUNTING OPTION 3 (Continued)

NOTE: For mounting directly* to Galaxy S9/S9+, use the (2) small plates with the integrated template guide for Galaxy as shown. *For mounting directly to device only. Do not mount to case.

- 1 Remove the white paper backing from both plates
- 2 Line up "U" channel to the fingerprint reader and camera on the phone.

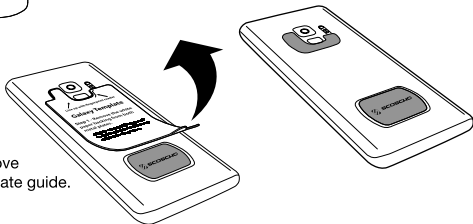


- 3 Remove the backing from the protective film as shown on the removal tabs (A), and place between the device and the lower plate (B). The protective film must be used when applying MAGICPLATE™ directly to the back of device.



- 4 When positioned, press plates firmly to affix.

- 5 Remove template guide.



REMOVING THE PLATE

Use a thin plastic card to carefully lift the plate's adhesive surface from the mounting surface. Slowly lift up and remove the plate.

Do not use any heat or liquids to remove the plate, due to risk of damaging your phone.
Contact Scosche Customer Service for any additional assistance at 800.363.4490 Ext. 1 or customerservice@scosche.com

Modification Required: Please read complete instructions before proceeding.

Location modification required for this installation, proceed with caution. If you are unsure or feel that the installation is too difficult, we recommend you seek professional installation. Note that additional installation fees may apply and vary by location. Scosche is not responsible or liable for any additional fees or modification done by the installer.

Caution! Before beginning the disassembly make sure of the following:

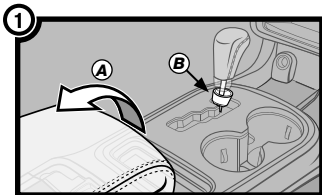
- Negative battery terminal is disconnected.
- Parking brake is **ON**.
- Gear shifter is set to a lower gear.

Accessing 12V Power

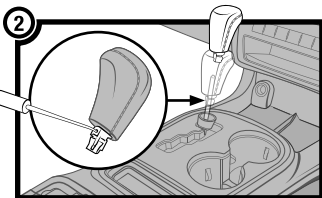
VEHICLE DISASSEMBLY

1. Perform steps A and B below:

- A. Open the center console's armrest
- B. Use a panel removal tool to unclip and slide the shifter's trim downward.



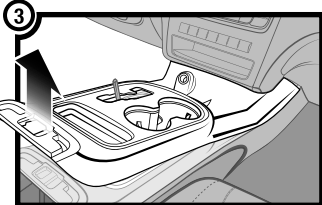
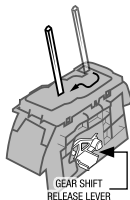
2. Use a pick tool to release the shifter's head; once released, lift the head and set aside for re-installation. **Note: Also remove and set aside the trim from step 1B for re-installation.**



3. Using a panel removal tool, unclip shifter panel, lift, and disconnect all connections, then set aside.

Note: Press on the gear release located under the panel to set the shifter to lower gear.

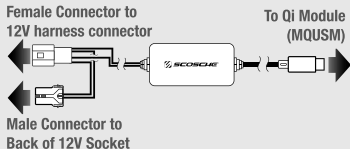
CAUTION! Ensure the parking brake is **ON** before setting shifting to a lower gear.



Testing Connection

Before proceeding to the preparation/installation please test the modules functionality by connecting the provided vehicle specific t-harness (diagram on right). Once the module is connected, place the Qi-enabled device on the module and refer to the LED Status chart below for specifics. For technical assistance with the installation please call or visit us on the web at: **1-800-363-4490 x1 | www.scosche.com/contact**

Note: The module can also be tested by connecting it to a USB to type-c connection power source (not included).



Foreign Object Detection

Please follow the MAGICPLATE™ mounting instruction on pages 2 or 3 for best charging results. Note that blocking the charging coil with anything metallic object may cause the module to not work as designed.

Battery Voltage Requirements

The MQUSM (Qi Module) is designed to operate at voltages between 13.3—14.7. If your vehicle does not supply sufficient voltage with the ignition OFF, you may need to turn the ignition to the ON position in order to operate the MQUSM.

LED Charging Status: The LED indicator on the side of the mount illuminates the charging status of the device. When powered ON, the indicator blinks in the following order: **BLUE, GREEN, BLUE.**

Standby = Green

Charging = Blue



**TECH
SUPPORT**

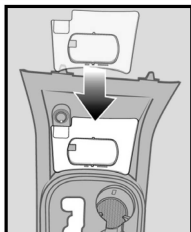
If you have any questions or need technical assistance with the installation, or the most current application please call or visit us on the web at:

(800) 363-4490 x1 | www.scosche.com/contact

PREPARATION

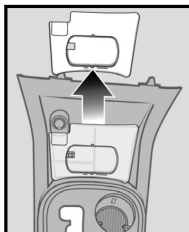
Once you have confirmed the modules working status, retrieve the shifter/tray panel removed during step 3 of the disassembly process. Next, follow the steps below in the order shown to ensure the pocket modification is done correctly and for best fit of the **CRQ03** bezel.

CAUTION! DO NOT attempt to drill a hole while the pocket is still mounted to the vehicle.



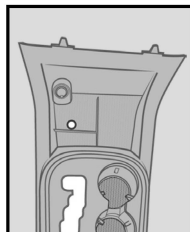
PREPARATION STEP A

Remove the tray panel's rubber mat. Next, set the CRQ03 Qi bezel into the gear shifter's tray panel.



PREPARATION STEP B

Using a contrasting chalk or marker, mark the hole location, then remove direct fit bezel.



PREPARATION STEP C

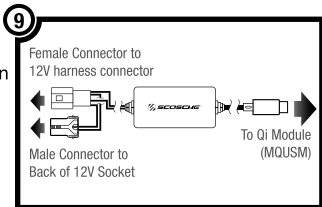
Carefully make a hole large enough to pass the USB type-c connector through.

**TECH
SUPPORT**

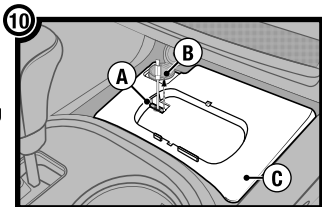
If you have any questions or need technical assistance with the installation, or the most current application please call or visit us on the web at:

(800) 363-4490 x1 | www.scosche.com/contact

9. Connect the provided power t-harness according to the diagram displayed under the Test Connection on page 5, or see illustration on the right. Connect the female and male 12V power connectors first then route the type-c connector to the designated slot created during the preparation steps on page 6.



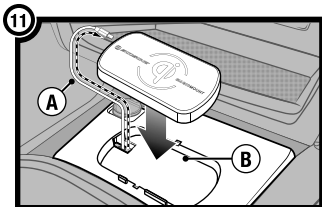
10. Perform the following as listed, see illustration 10 at right for reference:
A. Route the Type-C connector through the hole created during preparation on the OEM panel.
B. Second, pass connection through the CRQ03 bezel.
C. Place direct-Qi bezel onto the OEM pocket location.



11. Perform the following as listed, see illustration 11 at right for reference:
A. Connect the Type-C connector to the MQUSM.
B. Place the module onto Qi bezel

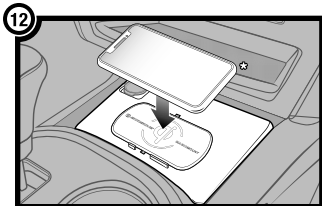
Notes:

- Hide any excess wiring under the panels before reassembling.
- Use the provided two-sided adhesives to secure the panel/module from moving.



12. Lastly, reassemble everything in reverse order, then place your Qi enabled device onto the CRQ03 assembly to charge your device. Refer to LED Charging Status for charging details (page 5).

***Phone NOT included**



FCC STATEMENT

This equipment has been tested and found to comply with the limits for a WPC device, pursuant to Part 18 of the FCC Rules. These limits are designed to provide reasonable protection against harmful interference in a residential installation.

CAUTION: Changes or modifications not expressly approved by the party responsible for compliance could void the user's authority to operate the product.

NOTE: This equipment has been tested and found to comply with the limits for a wireless power charger, pursuant to Part 18 of the FCC Rules. These limits are designed to provide reasonable protection against harmful interference in a residential installation. This equipment generated, uses and can radiate radio frequency energy and, if not installed and used in accordance with the instructions, may cause harmful interference to radio communications. However there is no guarantee that interference will occur in a particular installation. If this equipment does cause harmful interference to radio or television reception, which can be determined by turning the equipment off and on, the user is encouraged to try to correct the interference by one or more of the following measures:

- Reorient or relocate the receiving antenna.
- Increase the separation between the equipment and receiver.
- Connect the equipment into an outlet on a circuit different from that to which the receiver is connected.
- Consult the dealer or an experienced radio/TV technician for help.

FCC STATEMENT

This device complies with industry Canada License-exempt RSS standard(s). Operation is subject to the following two conditions: (1) this device may not cause interference, and (2) this device must accept any interference, including interference that may cause undesired operation of the device. This equipment complies with IC RSS-102 radiation exposure limits set forth for an uncontrolled environment. This transmitter must not be co-located or operated in conjunction with any other antenna or transmitter.

For complete warranty details or questions
visit us online at **www.scosche.com** or contact us at:

www.scosche.com/contact
customerservice@scosche.com
1(800) 363-4490 ext.1