

BASE-CLAMPS HOW IT WORKS:

STEP 1

Select the right size clamp
(Various sizes sold
separately)

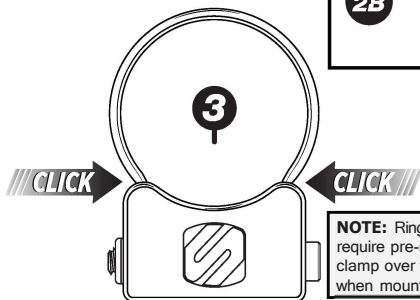
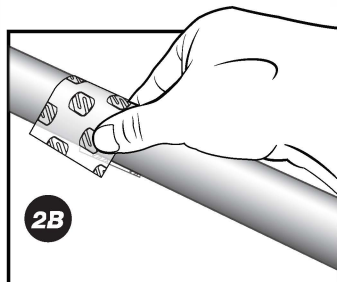
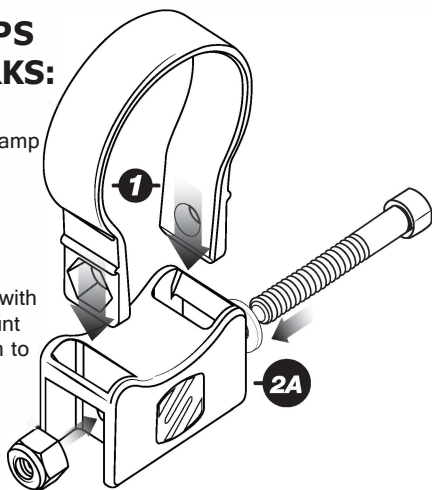
STEP2

Select the base & ring
clamp that coincides with
what you need to mount
2A. Use protective film to
prevent any paint
damage 2B.

STEP3

Lock it in place

The self locking clamp design
allows for easy one person
installation. Simply slip the clamp
over tube and lock in your base,
secure using the stainless
mounting hardware and you are
ready to Mount Up and Move Out.



NOTE: Ring clamps 2" & over in size may
require pre-stretching to help spread the
clamp over the tube. (Use Protective film
when mounting)

For complete warranty details, please visit us at
www.scosche.com or call (800) 363-4490

Register your product online at

www.scosche.com/register

SCDSCUE"

PSM21011

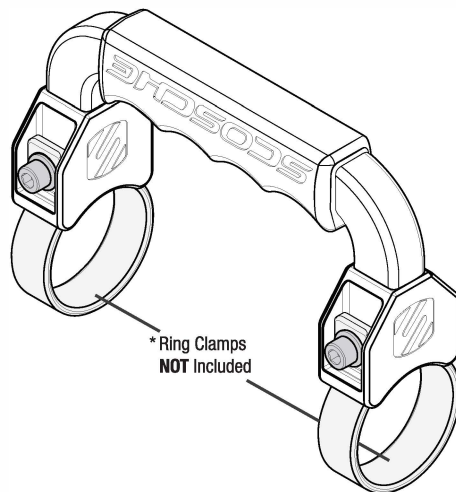
GRAB HANDLE

PARTS INCLUDED

(1) 6" Base Grab Handle

TOOLS REQUIRED (Not Included)

3/16" Hex (Allen) Key, Except where noted



VARIOUS RING CIAMP SIZES SOLO SEPARATELY w/ HARDWARE"

- PSC21006 - BaseClamp 1.5" Ring Clamp
- PSC21007 - BaseClamp 1.625" Ring Clamp
- PSC21009 - BaseClamp 1.75" Ring Clamp
- PSC21010 - BaseClamp 1.85" Ring Clamp
- PSC21011 - BaseClamp 1.875" Ring Clamp
- PSC21012 - BaseClamp 2" Ring Clamp



IMPORTANT!

DO NOT RETURN PRODUCT TO THE RETAILER

IF YOU NEED ASSISTANCE OR REPLACEMENT PARTS

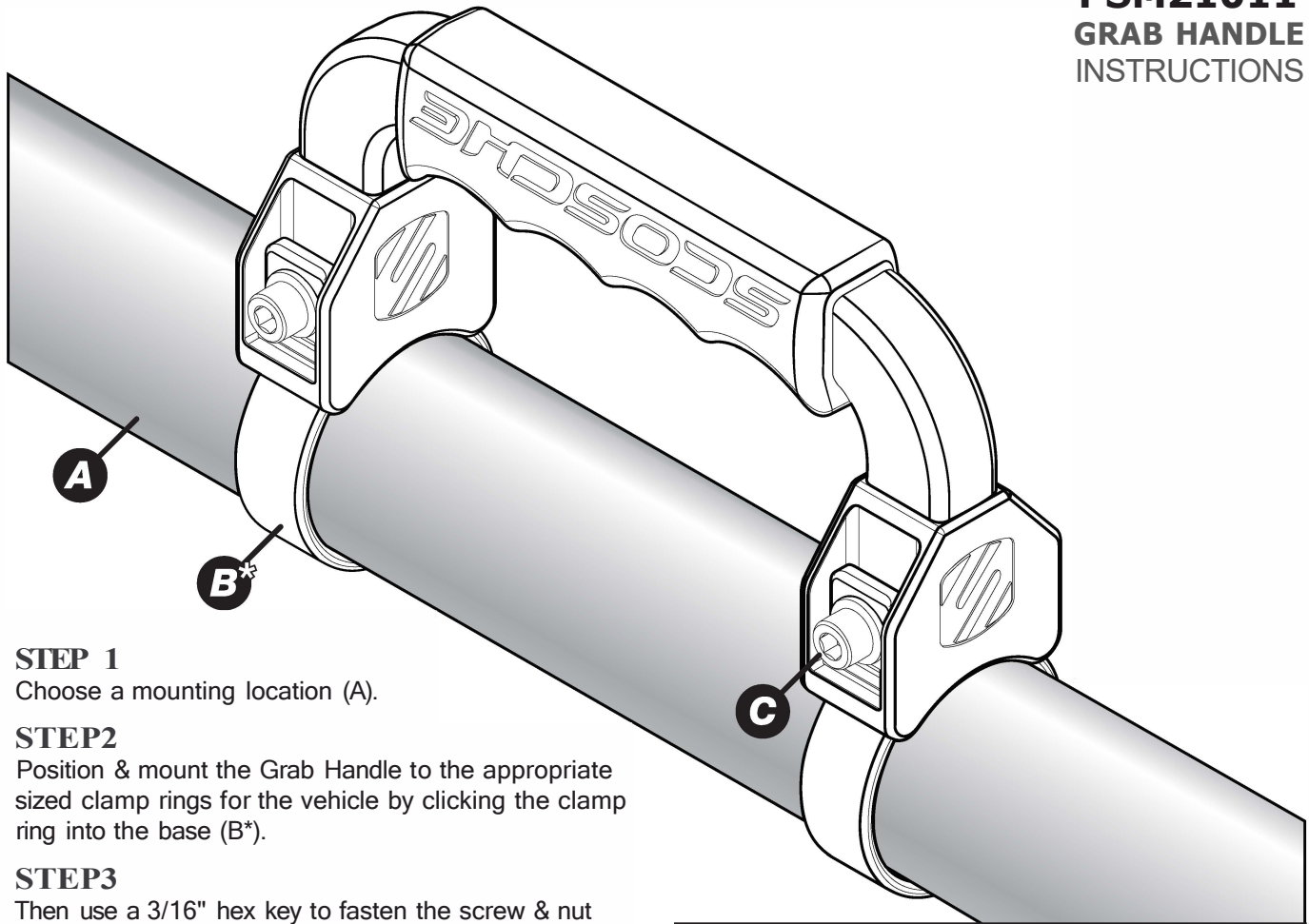
CALL US TOLL FREE: 1-800-363-4490 x1

HOURS MON-FRI 8AM-5:30PM (PST) SATURDAY 8AM-2PM (PST)

PSM21011

GRAB HANDLE

INSTRUCTIONS



STEP 1

Choose a mounting location (A).

STEP2

Position & mount the Grab Handle to the appropriate sized clamp rings for the vehicle by clicking the clamp ring into the base (B*).

STEP3

Then use a 3/16" hex key to fasten the screw & nut included with the clamp. Continue until clamp is tight and does not move (C).

Note: Do not exceed 200 inch-pounds.

Clamp Removal:

In-order to remove the clamp from location, the clamp must first be tightened to allow base removal. Once tightened, loosen the clamp and carefully squeeze clamp to remove from the location. **Note:** Use protective film to help avoid damage to the paint. • Various ring clamp sizes available (sold Separately w/ hardware).