

BASE-CLAMPS HOW IT WORKS:

STEP 1

Select the right size clamp
(Various sizes sold
separately)

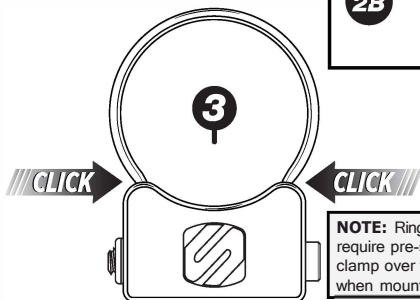
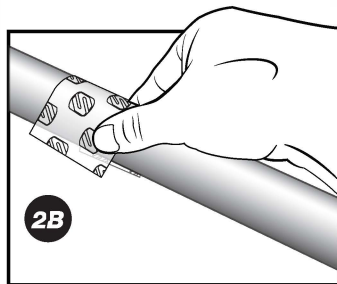
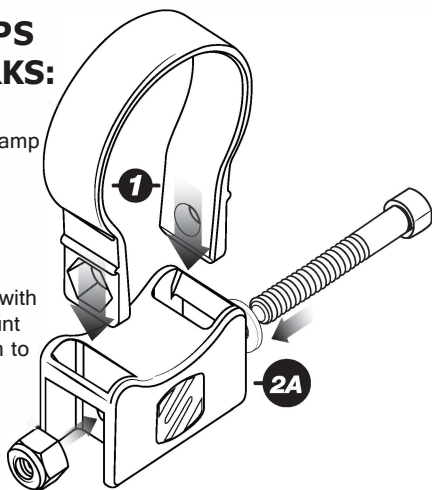
STEP2

Select the base & ring
clamp that coincides with
what you need to mount
2A. Use protective film to
prevent any
paint damage 2B.

STEP3

Lock it in place

The self locking clamp design
allows for easy one person
installation. Simply slip the clamp
over tube and lock in your base,
secure using the stainless
mounting hardware and you are
ready to Mount Up and Move Out.



NOTE: Ring clamps 2" & over in size may
require pre-stretching to help spread the
clamp over the tube. (Use Protective film
when mounting)

For complete warranty details, please visit us at
www.scosche.com or call (800) 363-4490

Register your product online at

www.scosche.com/register

SCDSCUE"

PSM21010

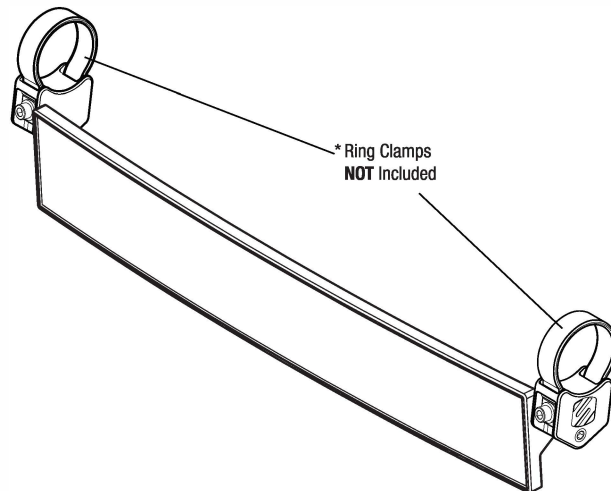
18" PANORAMIC REAR-VIEW MIRROR

PARTS INCLUDED

(1) 18" Panoramic Rear-view Mirror w/ Mounting Base

TOOLS REQUIRED (Not Included)

3/16" Hex (Allen) Key, Except where noted



VARIOUS RING CIAMP SIZES SOLO SEPARATELY w/ HARDWARE"

- PSC21006** - BaseClamp 1.5" Ring Clamp
- PSC21007** - BaseClamp 1.625" Ring Clamp
- PSC21009** - BaseClamp 1.75" Ring Clamp
- PSC21010** - BaseClamp 1.85" Ring Clamp
- PSC21011** - BaseClamp 1.875" Ring Clamp
- PSC21012** - BaseClamp 2" Ring Clamp



IMPORTANT!

DO NOT RETURN PRODUCT TO THE RETAILER

IF YOU NEED ASSISTANCE OR REPLACEMENT PARTS

CALL US TOLL FREE: 1-800-363-4490 x1

HOURS MON-FRI 8AM-5:30PM (PST) SATURDAY 8AM-2PM (PST)

PSM21009

18" PANORAMIC REAR-VIEW MIRROR

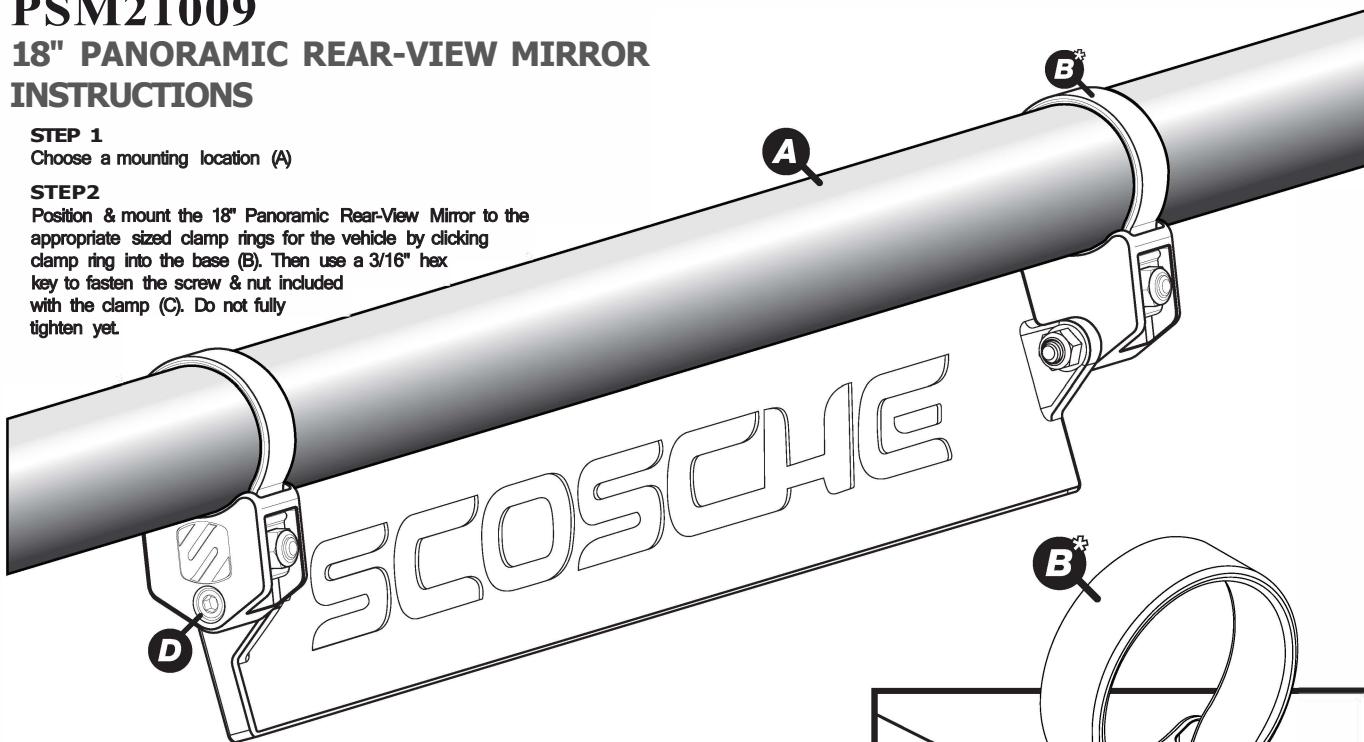
INSTRUCTIONS

STEP 1

Choose a mounting location (A)

STEP 2

Position & mount the 18" Panoramic Rear-View Mirror to the appropriate sized clamp rings for the vehicle by clicking clamp ring into the base (B). Then use a 3/16" hex key to fasten the screw & nut included with the clamp (C). Do not fully tighten yet.



STEP 3

Use the 3/16" hex key to adjust the mirror's position (D).

STEP 4

Once positioning is complete, tightening both adjustment screws (C & D). Continue until clamp is tight and does not move.

Note: Do not exceed 200 inch-pounds.

STEPS

Check mirror position and untighten, adjust & re-tighten if needed.

Clamp Removal:

In-order to remove the clamp from location, the clamp must first be tightened to allow base removal. Once tightened, loosen the clamp and carefully squeeze clamp to remove from the location. **Note:** Use protective film to help avoid damage to the paint. * Various ring clamp sizes available (sold separately w/ hardware).

