

Register your product online at

www.scosche.com/register



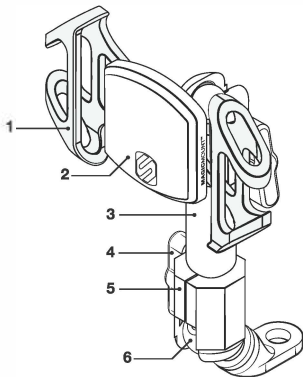
PSM11012

TerraClamp™

MagicMount Pro Bolt

PARTS INCLUDED

1. (1) Elastic Band
2. (1) ***MAGICMOUNT™** w/ Mounting Plates
3. (1) 1.5" Extension Bar
4. (2) Adjustment Knobs w/ Washers
5. (2) Mounting Adapters
6. (1) Bolt Mount w/ pivot joint ball



***Caution:** This magnetic mount is not a toy. The small magnetics are harmful if swallowed. Keep out of reach of children.

WARNING: Do not use the magnetic mount with any hard-drive based devices such as iPod classic, iPod video and Zune MP3 players.



IMPORTANT!

DO NOT RETURN PRODUCT TO THE RETAILER

IF YOU NEED ASSISTANCE OR REPLACEMENT PARTS

CALL US TOLL FREE: 1-800-621-3695 X1

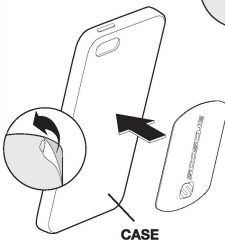
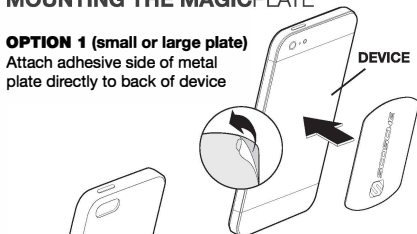
HOURS MON-FRI 8AM-5:30PM (PST)

SATURDAY 8AM-2PM (PST)

MOUNTING THE MAGICPLATE™

OPTION 1 (small or large plate)

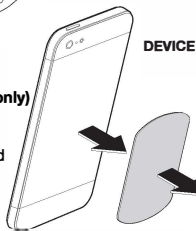
Attach adhesive side of metal plate directly to back of device



OPTION 2

(small or large plate)

Attach adhesive side of metal plate directly to back of case



OPTION 3 (large plate only)

Attach adhesive side of metal plate to interior of case, between device and inside of case. Plate will adhere to magnetic mount through rear panel of case.

NOTE: If you choose not to attach the metal plate to the device or case please leave the adhesive backing in place. Position the plate between the device and interior of case with the metal surface facing the case.

ADHESIVE SIDE

CASE

MAGICPLATE™ PLACEMENT

For Typical
Smartphones



For Wireless
Charging
Qi-enabled
Smartphones

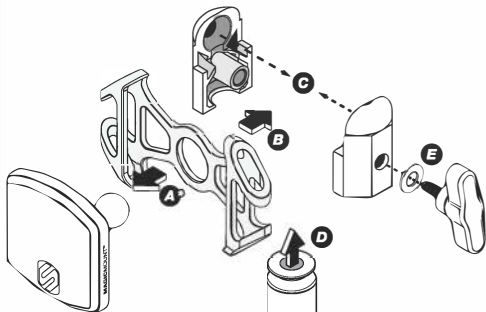


REMOVING THE MAGICPLATE™

Use a thin plastic card to carefully lift the plate's adhesive surface from the mounting surface. Slowly lift up and remove the plate.

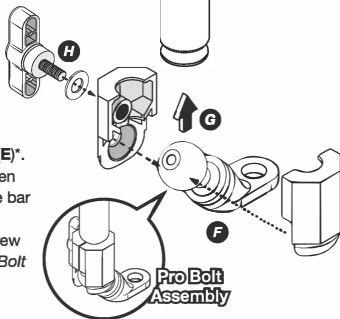
ASSEMBLY

*** NOTE:** For a stable and secure riding experience we recommend using the provided elastic band when mounting the device to a mobile application. Use Non-elastic band option on stationary applications **ONLY**



Instructions

1. Install **MAGICMOUNT™** ball into the elastic center ring and hook into place (A*).
2. Mount the ball of the magnetic mount (B) and the bar extension (D) to the two adapters (C).
3. Secure the assembly using the screw knob and washer provided (E)*.
4. Place the pro bolt mount in-between the two adapters (F) along with the bar extension (G).
5. Secure the assembly using the screw and washer provided (H), see *Pro Bolt Assembly* illustration for result.



SET-UP GUIDE

MAGICMOUNT™ Adjustment

Loosen knob (A) to reposition the angle (B) of the magnetic mount head. Once the position is set, tighten the knob (A) to secure the positioning angle of the bar extension.

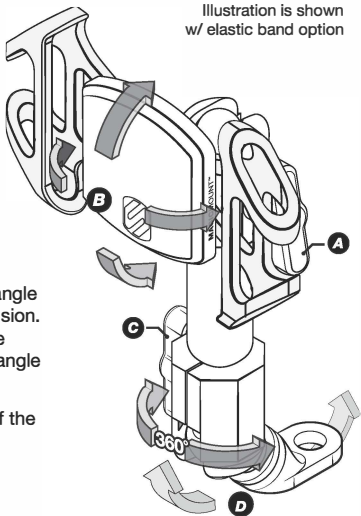
NOTE: When loosened the angle of the bar is capable of 360° rotation for positioning.

Pro Bolt Adjustment

Loosen knob (C) to reposition the angle (D) of the bolt mount and bar extension. Once the position is set, tighten the knob (C) to secure the positioning angle of the bar extension/pro bolt.

NOTE: When loosened the angle of the bar is capable of 360° rotation for positioning.

Illustration is shown
w/ elastic band option



**For complete warranty details, please visit us at
www.scosche.com or call (800) 363-4490**