

# MAGICPLATE™ ADAPTER KIT

## MAGICMOUNT™ DUAL-MAGNET ADAPTER KIT

### PARTS INCLUDED

- (1) **MAGICPLATE™** dual-magnet adapter plate for use with **MAGICMOUNT™** non-charging magnetic mounts
- (1) Large single plate with template guide for mounting to device
- (2) Small metal plates with template guide for mounting to case
- (2) Small metal plates with template guide and protective film for Galaxy S9/S9+
- (2) Cleaning wipes

### 1. MAGICPLATE™ DUAL MAGNET ADAPTER PLATE

#### 1a. DUAL MAGNETS

(for mounting plates - see below)

#### 1b. METAL CENTER PLATE

(for **MAGICMOUNT™** magnetic mount - not included)

### 2. MAGICPLATE™ LARGE PLATE

(for mounting to **device**)

#### 2a. MAGNETIC MOUNTING SURFACES (top & bottom)

#### 2b. NON-MAGNETIC CHARGING AREA (center)

#### 2c. TEMPLATE GUIDE

### 3. MAGICPLATE™ SMALL METAL PLATES (2)

(for mounting to **case**)

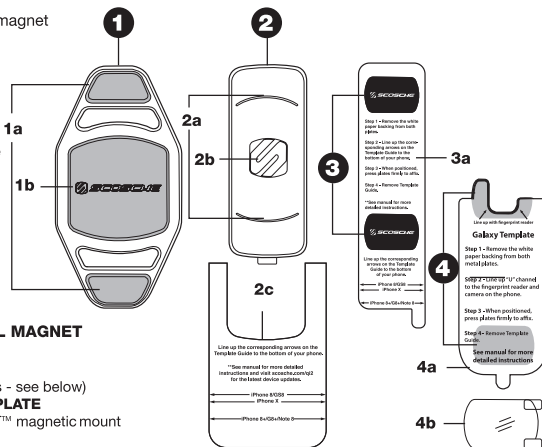
#### 3a. TEMPLATE GUIDE

### 4. MAGICPLATE™ SMALL METAL PLATES (2)

(for mounting to **Galaxy S9/S9+**)

#### 4a. TEMPLATE GUIDE

#### 4b. PROTECTIVE FILM (for bottom plate only)



### Questions?

**Need help with your Product?**

**Call Customer Service at:**

**(800) 363-4490 x1**

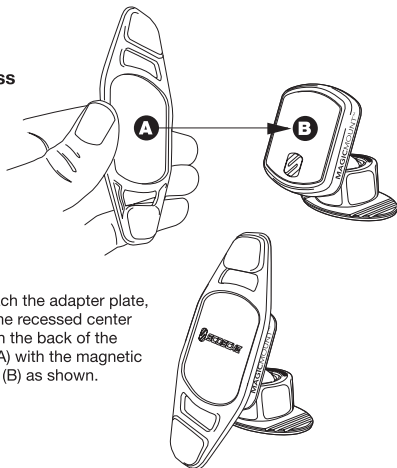


Register your product online at

**www.scosche.com/register**

## ADAPTER PLATE FOR MAGICMOUNT™

**NOTE:** The **MAGICPLATE™** adapter plate (page 1, #1) is designed to safely attach devices with Qi wireless charging to **MAGICMOUNT™** non-charging magnetic mounts (sold separately). Only use the adapter plate with **MAGICMOUNT™** magnetic mounts without wireless charging capability.

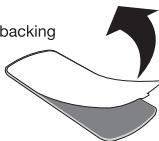


To attach the adapter plate, align the recessed center area on the back of the plate (A) with the magnetic mount (B) as shown.

## MAGICPLATE™ MOUNTING OPTIONS

**NOTE:** For mounting directly to device, use the large single plate with template guide (page 1, #2).

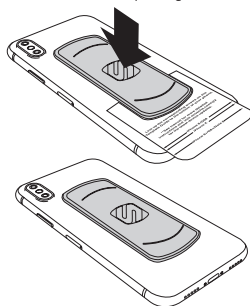
1. Remove paper backing from the plate.



2. Line up the corresponding arrows on the template guide to the bottom of your phone.

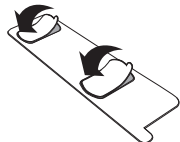


3. When positioned, press plate firmly to affix, and remove template guide.



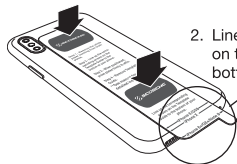
## MAGICPLATE™ MOUNTING OPTIONS (cont'd)

1. Remove the white paper backing from both plates.

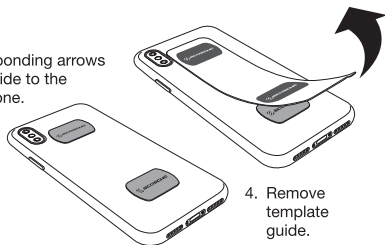


**NOTE:** For mounting to case, use the (2) small plates with the integrated template guide (page 1, #3).

2. Line up the corresponding arrows on the template guide to the bottom of your phone.



3. When positioned, press plates firmly to affix.

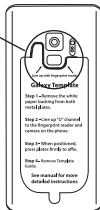


**NOTE:** For mounting directly\* to Galaxy S9/S9+, use the (2) small plates with the integrated template guide for Galaxy (page 1, #4). \*For mounting directly to device only. Do not mount to case.

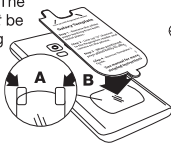
1. Remove the white paper backing from both plates.



2. Line up "U" channel to the fingerprint reader and camera on the phone.



3. Remove the backing from the protective film as shown on the removal tabs (A), and place between the device and the lower plate (B). The protective film *must* be used when applying MAGICPLATE™ directly to the back of device.

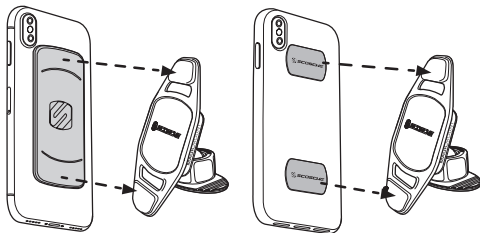


4. When positioned, press plates firmly to affix.

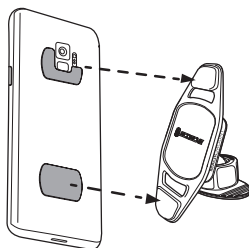


5. Remove template guide.

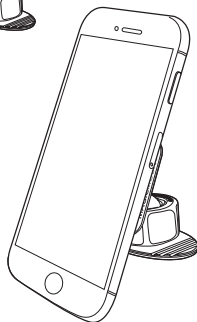
## PLACING YOUR DEVICE ON THE MAGICMOUNT™ WITH MAGICPLATE™ DUAL-MAGNET ADAPTER



When placing your device on the adapter plate, align the top & bottom magnetic surfaces on the back of your device with the top & bottom magnetic areas on the plate.



For complete warranty details,  
please visit us at [www.scosche.com](http://www.scosche.com)  
or call (800) 363-4490



### REMOVING THE METAL PLATES

Use a thin plastic card to carefully lift the plate's adhesive surface from the mounting surface. **Do not use any heat or liquids to remove the plate, due to risk of damaging your phone.** Contact Scosche Customer Service for any additional assistance at 800.363.4490 Ext. 1 or [customerservice@scosche.com](mailto:customerservice@scosche.com).