



MM2VP2WDSR-SP0

MAGICMOUNT™ PRO SELECT

MAGNETIC MOUNTING SYSTEM FOR MOBILE DEVICES

PARTS INCLUDED

- (1) **MAGICMOUNT™** magnetic mount with dual-rotating vent mount
- (1) **MAGICMOUNT™** magnetic mount with suction cup mount*
- (2) **MAGICPLATE™** small metal plates
- (2) **MAGICPLATE™** large metal plates
- (2) Protective film stickers
- (2) Cleaning wipes



Questions?

Need help with your Product?

Call Customer Service at:

(800) 363-4490 x1

Please Note

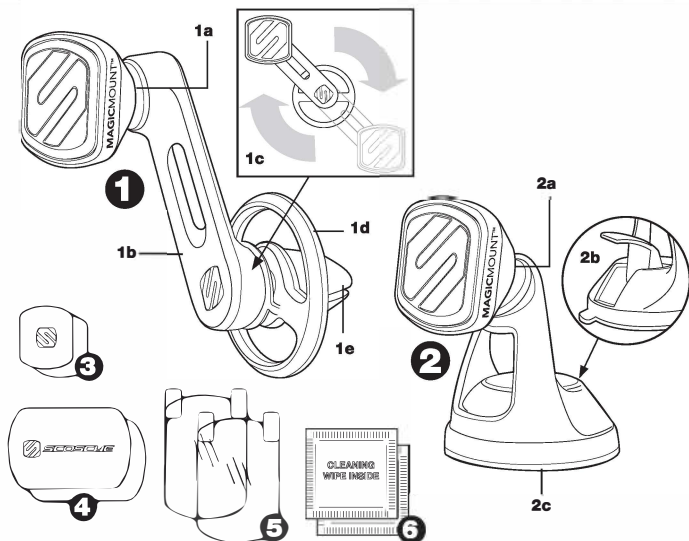
This product is not for use with hard-drive based MP3 players, including iPod and Zune. Incorrect use of this product may result in damage and will not be covered under the terms of the limited warranty.

***NOTICE TO DRIVERS:** Please check your local and state vehicle codes regarding cell phone, GPS or portable device mounting laws and restrictions. Alternative Scosche mounting products are available, if windshield/dash mounting is prohibited in your state or locale. Scosche does not take any responsibility for any fines, penalties, or damages that may be incurred as a result of disregarding this notice.

Register your product online at

www.scosche.com/register

CONTENTS/FEATURES



1. MAGICMOUNT™ Magnetic Mount* with Dual-Rotating Vent Mount

1a. Ball Joint (allows 360° rotation and angle adjustment of Magnetic Mount)

1b. Mounting arm

1c. Ball Joint (allows 360° rotation of Mounting Arm)

1d. "Free Flow" Vent Ring

1e. Vent Clip

2. MAGICMOUNT™ Magnetic Mount* with Suction Cup Mount

2a. Ball Joint (allows 360° rotation and angle adjustment of Magnetic Mount)

2b. Suction Lever

2c. Suction Cup Base

3. MAGICPLATE™ Small Metal Plates (2 included)

4. MAGICPLATE™ Large Metal Plates (2 included)

5. Protective Film Stickers (2 included)

6. Cleaning Wipes (2 included)

***CAUTION:** The magnetic mount is not a toy. The small magnets are harmful if swallowed. Keep away from children.

MAGICPLATE™ INSTALLATION

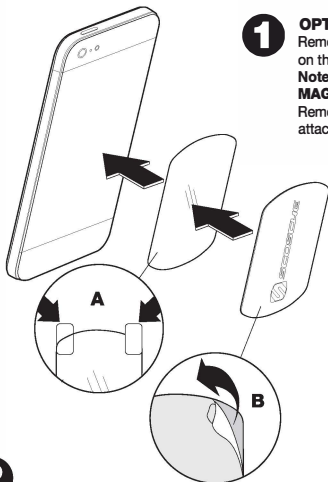
1

OPTION 1

Remove the backing from the protective film as shown on the removal tabs, and place on the **device** (A).

Note: The protective film *must* be used when applying **MAGICPLATE™** directly to the back of your device.

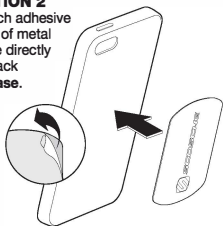
Remove the adhesive backing from the metal plate and attach the plate to the protective film on the device (B).



2

OPTION 2

Attach adhesive side of metal plate directly to back of **case**.

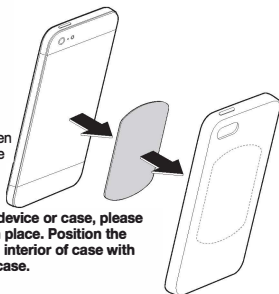


3

OPTION 3

Attach adhesive side of metal plate to interior of case, between device and inside of case. Plate will adhere to magnetic mount through rear panel of case.

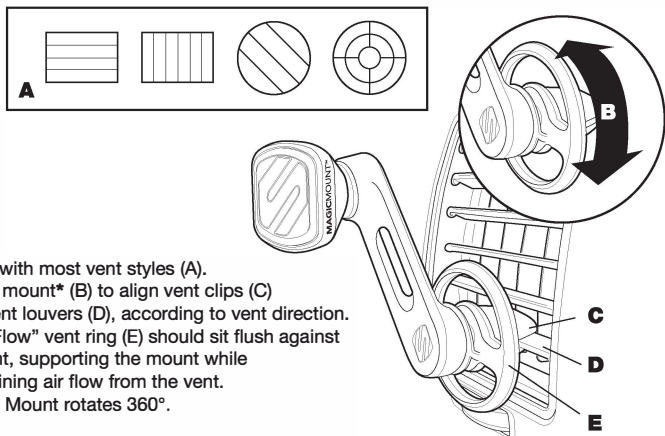
NOTE: If choosing not to attach the metal plate to the device or case, please leave the adhesive backing in place. Position the plate between the device and interior of case with the metal surface facing the case.



MAGICPLATE™ REMOVAL

Use a thin plastic card to *carefully* lift the plates adhesive surface from the mounting surface. Slowly lift up and remove the plate. **Do not use any heat or liquids to remove the plate, due to risk of damaging your phone or dash.** Contact Scosche Customer Service for any additional assistance at 800.363.4490 Ext. 1 or customerservice@scosche.com.

VENT MOUNT



Works with most vent styles (A).
Rotate mount* (B) to align vent clips (C)
with vent louvers (D), according to vent direction.
“Free Flow” vent ring (E) should sit flush against
the vent, supporting the mount while
maintaining air flow from the vent.

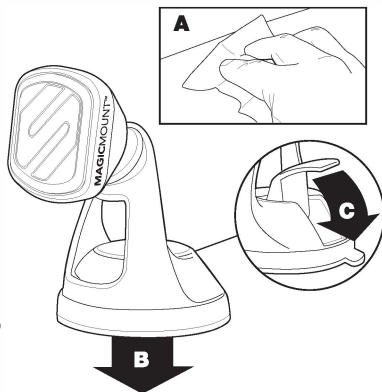
***Note:** Mount rotates 360°.

SUCTION CUP MOUNT

Clean the mounting surface
with supplied cleaning wipe (A).

Note: Wipe may cause discoloration
of certain plastics, vinyls and painted
surfaces. It is recommended to test in
an inconspicuous area first.

Peel the wrapping from the bottom
of the suction cup base, and place in
position (B). Press down on the lever
to lock the mount in place (C).



For complete warranty details, please visit us at www.scosche.com or call (800) 363-4490