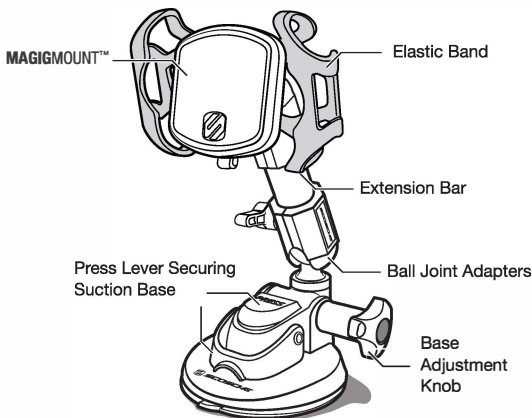




**SCOSCHE**

**PSM11023**

## **MAGICMOUNT™ SUCTION CUP MOUNT**



---

## **CONTENT**

---

### **PARTS INCLUDED**

1. (1) Elastic Band
2. (1) **MAGICMOUNT™** w/ Mounting Plates
3. (1) Cleaning Wipe
4. (2) Set of Ball Joint Adapters w/ Tightening Knob & Washers
5. (1) Press and Lever Adjustable Securing Suction Base
6. (1) Extension Bar



**IMPORTANT!**

**DO NOT RETURN PRODUCT TO THE RETAILER**

**IF YOU NEED ASSISTANCE OR REPLACEMENT PARTS**

**CALL US TOLL FREE: 1-800-363-4490 x1**

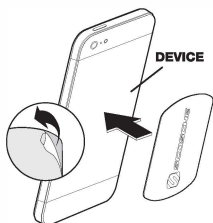
**HOURS MON-FRI 8AM-5:30PM (PST) SATURDAY 8AM-2PM (PST)**

# MOUNTING THE MAGICPLATE™

**OPTION 1 (small or large plate)**  
Attach adhesive side of metal plate directly to back of device

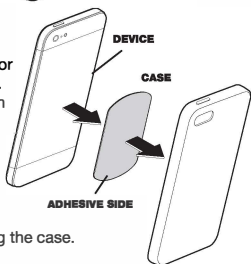


**OPTION 2 (small or large plate)**  
Attach adhesive side of metal plate directly to back of case



**OPTION 3 (large plate only)**  
Attach adhesive side of metal plate to interior of case, between device and inside of case. Plate will adhere to magnetic mount through rear panel of case.

**NOTE:** If you choose not to attach the metal plate to the device or case please leave the adhesive backing in place. Position the plate between the device and interior of case with the metal surface facing the case.



## MAGICPLATE™ PLACEMENT



For Typical Smartphones



For Wireless Charging  
Qi-enabled Smartphones

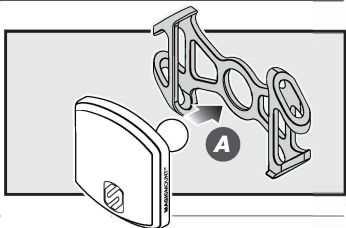
### REMOVING THE MAGICPLATE™

Use a thin plastic card to carefully lift the plate's adhesive surface from the mounting surface. Slowly lift up and remove the plate.

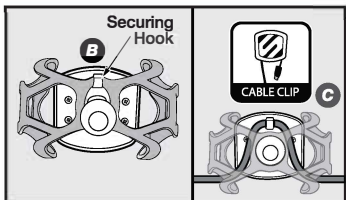
For complete warranty details, please visit us at  
[www.scosche.com](http://www.scosche.com) or call (800) 363-4490

## MAGICMOUNT™ ASSEMBLY

Insert the **MAGICMOUNT™** pivot ball through the center of the elastic band (**A**), see assembled example illustration on right.

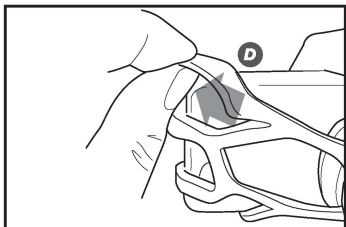


Secure the elastic band using the securing hook located on the backside of the **MAGICMOUNT™** (**B**), see illustration on right.



Note: Securing hook can also be used as a cable clip when elastic band is not being used (**C**).

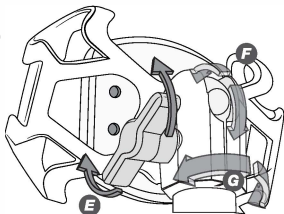
**Elastic Band:** With the metal plate positioned onto the device, align the elastic band with your device and attach to the corners of your device as shown on the right (**D**). The elastic band will secure your device while riding.



**NOTE:** Elastic band can be attached horizontally or vertically.

### MAGICMOUNT™ Adjustment

Loosen knob (**E**) to reposition or attach the **MAGICMOUNT™** up to 360° (**F, G**). Once attached and the position is set, tighten the knob (**E**) to secure the positioning **MAGICMOUNT™**.



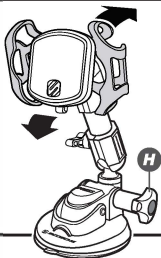
**NOTE:** When loosened the angle of the **MAGICMOUNT™** is capable of 360° rotation for positioning.

# ADJUSTING EXTENSION NECK

## ADJUSTING EXTENSION NECK

Adjusting the tilt angle of the neck.

1. Turn the lower knob to loosen the extension neck (H). Once loose, position the extension to your preferred position.
2. Tighten the lower knob (H) to secure the desired location into place.



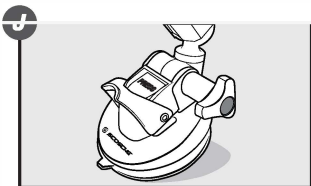
## MOUNTING

### MOUNTING THE SUCTION MOUNT

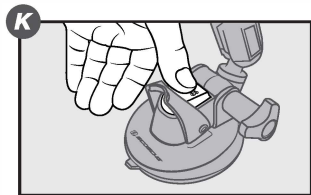
- 1 Clean mounting location thoroughly of debris and dust for the best adhesion (I).



- 2 Apply the suction to the mounting location and make sure the lever is to the up position, as shown in the illustration (J).



- 3 Firmly apply pressure to the button labeled **PRESS** to create a vacuum to the suction (K).



- 4 Set the lever to the bottom position (L) to secure the suction and the mount to the designated mounting location.

