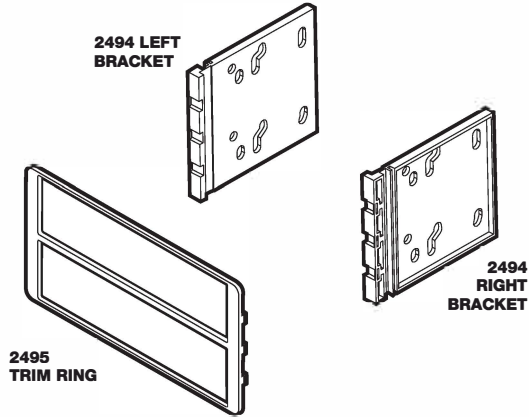


**IN-DASH DOUBLE DIN INSTALLATION KIT FOR  
1995-2010 FORD/MERCURY/MAZDA**

**VEHICLE APPLICATIONS:**

- FORD:**  
 1995-2001 EXPLORER (ALL MODELS)  
 2002-2003 EXPLORER SPORT  
 2001-2005 EXPLORER SPORT TRAC  
 1995-2010 RANGER
- MAZDA:**  
 1995-2009 B SERIES PICKUP
- MERCURY:**  
 1996-2001 MOUNTAINEER



**INTRODUCTION / PRELIMINARY**

This premium installation kit is for 1995-2010 Ford, Mercury & Mazda vehicles. Included are all the parts you need to mount your car stereo or CD player into your vehicle's dash. Refer to the individual instruction in this manual to remove your vehicle's factory radio and assemble the kit.

**CAUTION**  
 DISCONNECT YOUR VEHICLE'S NEGATIVE BATTERY TERMINAL BEFORE THE INSTALLATION TO HELP PREVENT ELECTRICAL DAMAGE. WE RECOMMEND THE USE OF A VOLT/OHM METER OVER A TEST LIGHT TO CHECK WIRING. A TEST LIGHT OR GROUNDED WIRE PROBE CAN CAUSE DAMAGE TO THE VEHICLE'S COMPUTER AND/OR DIAGNOSTIC SYSTEMS. AVOID ALL FACTORY AIRBAG WIRING - AIRBAGS CAN ACCIDENTALLY DEPLOY CAUSING SERIOUS INJURY OR DEATH.

- NOTES**
- See your vehicle's instructions for any special tools your installation might require.
  - Read all instructions accompanying your car stereo for proper wiring and mounting instructions.



**IMPORTANT!**

*Do Not Return Product to the Retailer!*

**IF YOU NEED ASSISTANCE OR REPLACEMENT PARTS**

*Call us FIRST at ...*

**1-800-621-3695 ext 3**

**Toll Free, No-Charge tech support**

- FRIENDLY CUSTOMER SERVICE TECHNICIANS
- YOU WON'T BE ON HOLD LONGER THAN 5 MINUTES

**OUR HOURS ARE:**  
 Monday - Friday 8:00 a.m. to 5:30 p.m. (PST)  
 Saturday 8:00 a.m. to 2:00 p.m. (PST)

**FACTORY WIRING CODES**

For Factory Wiring Codes go to: [www.scosche-cars.com](http://www.scosche-cars.com)

**CAR STEREO CONNECTORS**

PROVIDE EASY CONNECTION OF YOUR CAR STEREO TO FACTORY WIRING HARNESS.

**FD16B**  
 1998-Up Ford

**FDK10B**  
 1985-Up Ford/Lincoln/Mercury/  
 Mazda Premium Sound



**PRELIMINARY STEREO REMOVAL**

1. Using the Ford DIN removal tool carefully insert into the holes on the outside edges of the stereo to release the stereo and pull it out of the dash cavity.
2. Unplug all connectors and remove the stereo.
3. Extract (2) screws in the dash bezel just above the heater/air conditioning controls.
4. Carefully pry out on the dash bezel to release the fastening clips, unplug any switches (if equipped), lighter, and remove the bezel.

**STEREO INSTALLATION**

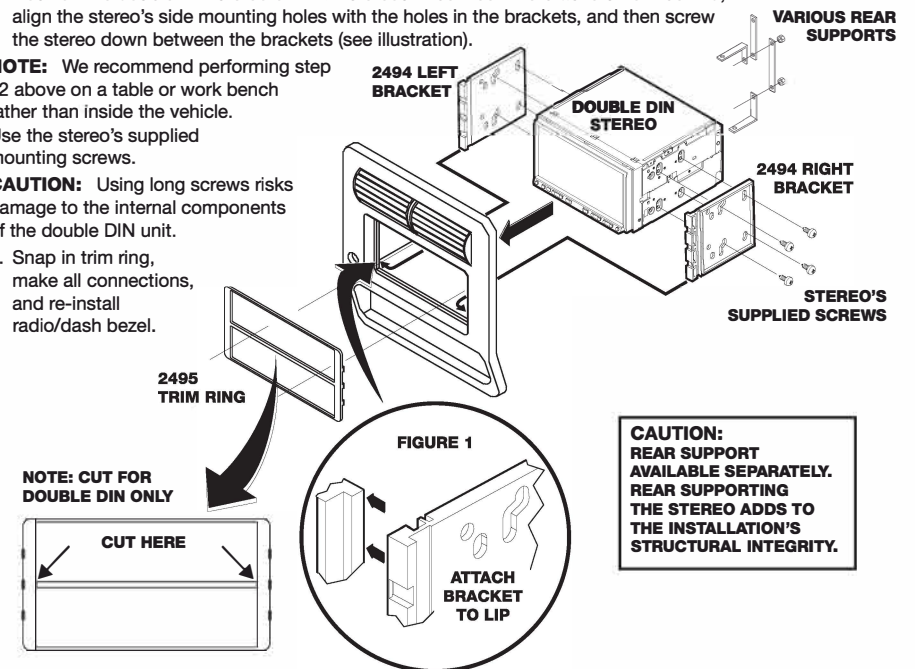
**NOTE:** This installation requires dash bezel modification because of the nosepiece height of the double DIN stereos. Make note of this if you are working on a leased vehicle or the original unit is to be re-installed at some future date.

1. Carefully file or grind away the TOP and BOTTOM portions of the small lip around the inside of the dash bezel's stereo opening.
2. Push the 2494 left and the 2494 right brackets onto the corresponding sides of the stereo opening. Push the brackets onto the lip on each side (see Figure 1).
3. Position the double DIN stereo or 2 DIN stereos in between the brackets from behind, align the stereo's side mounting holes with the holes in the brackets, and then screw the stereo down between the brackets (see illustration).

**NOTE:** We recommend performing step #2 above on a table or work bench rather than inside the vehicle. Use the stereo's supplied mounting screws.

**CAUTION:** Using long screws risks damage to the internal components of the double DIN unit.

4. Snap in trim ring, make all connections, and re-install radio/dash bezel.



**CAUTION:** REAR SUPPORT AVAILABLE SEPARATELY. REAR SUPPORTING THE STEREO ADDS TO THE INSTALLATION'S STRUCTURAL INTEGRITY.

**LIABILITY DISCLAIMER**

This instruction booklet is based on carefully documented data and research of automobile dash disassembly, wire harness/codes and information pertaining to installation of this kit (FD1330B) in 1995-2010 Ford, Mercury & Mazda vehicles. Scosche Industries, Inc. can not be held responsible for discrepancies/inconsistencies that may occur due to the automobile manufacturing changes or options, or damage that may occur in the automobile during the installation of components while using this booklet.