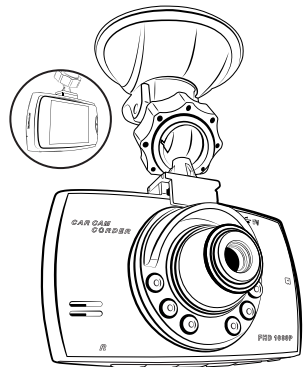


Register your product online at www.scosche.com/register



DDVR2

DIGITAL HD VIDEO RECORDER FOR VEHICLES



PARTS INCLUDED

- (1) DVR unit
- (1) Suction-cup mount
- (1) 12-24V car power/charging adapter to USB Mini plug
- (1) 4GB Micro SD card

FEATURES

- HD TFT SCREEN, AVI Video Format
 - 1080P at 24fps
 - 720P at 30fps
- LED Night-Vision
- 100° Wide Angle Camera Lens
- Cycle Recording
 - Records over old footage when SD is Full
- ON/OFF with vehicle Start-ON/OFF

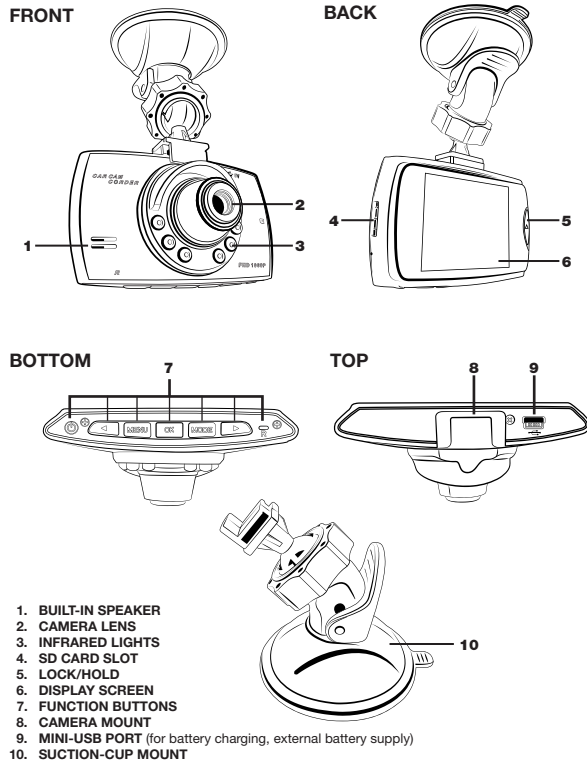
SPECIFICATIONS

Storage: Micro SD 4GB-32GB
USB: 2.0 / AV out



IMPORTANT!
DO NOT RETURN PRODUCT TO THE RETAILER
IF YOU NEED ASSISTANCE OR REPLACEMENT PARTS
CALL US TOLL FREE: 1-800-621-3695 X3
HOURS: MON-FRI 9AM-5:30PM (PST) SATURDAY 9AM-2PM (PST)

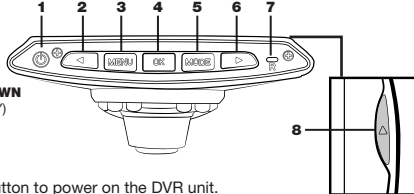
DDVR2 OVERVIEW



- 1. BUILT-IN SPEAKER
- 2. CAMERA LENS
- 3. INFRARED LIGHTS
- 4. SD CARD SLOT
- 5. LOCK/HOLD
- 6. DISPLAY SCREEN
- 7. FUNCTION BUTTONS
- 8. CAMERA MOUNT
- 9. MINI-USB PORT (for battery charging, external battery supply)
- 10. SUCTION-CUP MOUNT

BUTTON FUNCTIONS

1. POWER ON/OFF
2. TOGGLE LEFT/UP
3. MENU
4. OK (CONFIRM)
5. MODE
6. TOGGLE RIGHT/DOWN
7. RESET (EMERGENCY)
8. LOCK



POWER

Press the POWER Button to power on the DVR unit. While the DVR is ON, press and release to switch between Day and Night modes. Press and Hold to power off the DVR.

TOGGLE LEFT/UP

Press to move LEFT/UP or toggle through menu and option selections.

MENU

Press to enter camera VIDEO OUTPUT and unit SETUP configuration settings.

OK

In **Video** mode press to start or stop video recording. In **Photo** mode press to capture still image. In **Voice Record** mode press to start or stop voice recording. In **Playback** mode press to PLAY/PAUSE Video/VOICE recording. In **Menu** mode press to select a highlighted value or option.

MODE

Press to switch between Video, Photo, Voice Recordings and Playback.

TOGGLE RIGHT/DOWN

Press to move RIGHT/DOWN or toggle through menu and option selections.

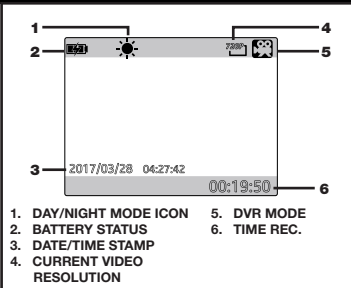
RESET

Press to RESET the device.

Lock

Safely secures and protects the recorded/still file to the SD card.

HOME SCREEN

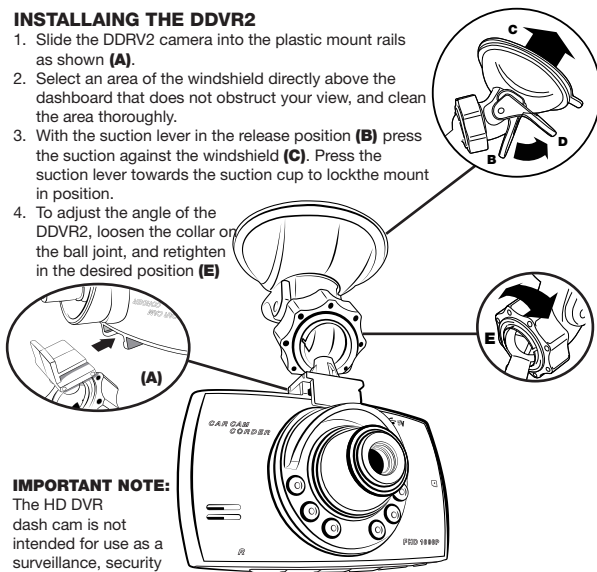


- 1. DAY/NIGHT MODE ICON
- 2. BATTERY STATUS
- 3. DATE/TIME STAMP
- 4. CURRENT VIDEO RESOLUTION
- 5. DVR MODE
- 6. TIME REC.

MOUNTING

INSTALLING THE DDVR2

1. Slide the DDVR2 camera into the plastic mount rails as shown **(A)**.
2. Select an area of the windshield directly above the dashboard that does not obstruct your view, and clean the area thoroughly.
3. With the suction lever in the release position **(B)** press the suction against the windshield **(C)**. Press the suction lever towards the suction cup to lock the mount in position.
4. To adjust the angle of the DDVR2, loosen the collar on the ball joint, and retighten in the desired position **(E)**.



IMPORTANT NOTE:

The HD DVR dash cam is not intended for use as a surveillance, security or time-lapse camera system.

CAMERA ADJUSTMENT

The DVR camera records in one direction. To record the view in front of the vehicle face the camera aimed in the direction through the front windshield. **Optional 1:** To record the view inside of the vehicle, face the camera looking in the direction of the interior/passengers. **Optional 2:** To record the view at the rear of the vehicle, face the camera looking out the rear window. Adjust camera as needed to avoid direct sun glare. Recorded DVR video footage is adversely affected by harsh (direct) sunlight.

GETTING STARTED

POWERING THE DDVR2

Plug the included 12V Adapter into your vehicle's 12V Accessory or Lighter socket. Connect the 12V adapter to the DDVR2.

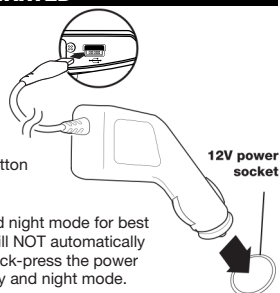


POWERING ON

Press and hold the power button to turn on the unit.

DAY / NIGHT MODE

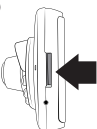
The user must select day and night mode for best performance. The DDVR1 will NOT automatically switch from day to night. Quick-press the power button to switch between day and night mode.



12V power socket

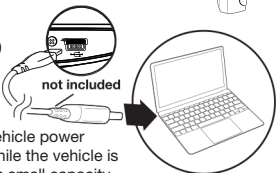
INSTALLING AND FORMATTING THE MICRO SD MEMORY CARD

1. The home screen will prompt you that a memory card is not installed. Place the included Micro SD card in the card slot.
2. Press the MENU button to access SETUP Menu (see pg. 6).
3. Under SETUP, select FORMAT, then EXECUTE to format memory card. Note: If a previously used SD card is formatted, all previous data will be deleted.



DATA TRANSFER

Use a mini-USB to USB cable (not included) to access or store video or photos from the DDVR2's SD card on your PC.



not included

DVR BATTERY USE

During normal (driving) use, keep the 12V vehicle power adapter plugged in to power the HD DVR while the vehicle is running. The DDVR1 unit comes with built-in small capacity internal battery. Its battery is designed for the DVR to save and process videos for a SHORT duration after the main power is turned off at the supply cord.

LOCKING VIDEO FILES

If you want to save a recorded event (or video file in progress), press the Hold/Lock button (see page 3) and a lock icon will appear on the screen indicating the video will be saved. This file will be saved until removal from SD Memory card. Note that when video files are held/locked the SD video card capacity will be reduced until they are be downloaded or deleted from the SD memory Card.

VIDEO TIME (LOOP RECORDING)

In the video mode, if you select MENU and scroll down, then you can select 3, 5, or 10 loop recording. The loop recording feature just continually records for the selected amount of time before starting a new recording. Once the memory is full, the camera automatically deletes the oldest recording to make room for the new one. If there is a recording that you do not want deleted, you can simply plug the camera into your computer via USB port and save the desired video onto external storage.

The camera will record video files in 1/3/5/10 minute segments. The camera saves a file at the end of that time.

Example:

If you set the loop cycle to "5" minutes and drive for 30 minutes, you will have approximately (6) AVI video files recorded to the memory card. The larger the card the more driving footage will be stored on the DVR. When the memory card is full, the DVR automatically over-writes the oldest segment, unless you have chosen to save a specific file using the "Hold" button. Also note, there is a recording that you do not want deleted, you can simply plug the camera into your computer via an available USB port and save the desired video onto another storage device. The DVR will recognize up to a 32G card only. Typically a 4GIG SD card (as included with the unit) can record up to 50 minutes of 720p video. Note this when setting the resolution on your HD DVR.

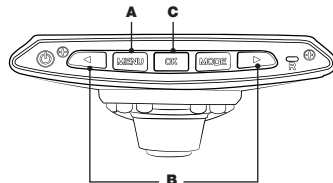
NAVIGATION MENUS

SETUP

1. Press the MENU Button (A) to access Setup Menu page 1. (Press the Menu button a second time to access page 2 and a 3rd time to access page 3).
2. Use the Scroll UP/DOWN Buttons (B) to select the desired feature.
3. Press the OK button to select the desired feature (C).
4. Use the Scroll UP/DOWN Buttons to select the desired value (B).
5. Press OK to store the chosen value (C).
6. Repeat steps 1-5 above to configure the DDVR2 to your satisfaction.

Sample Menu Illustration

Video Output	Setup
Size	720P
Time Stamp	ON
MotionDetect	OFF
Video Time	OFF
Voice Record	ON
◀ Exit OK Setup	



DDVR2 SETTINGS MENUS

CAMERA MENU

Feature name	Selections	Description
Size	1080p/720p/VGA	Sets the resolution for video recording.
Time Stamp	On/Off	Controls time stamp on file.
Motion Detecton	On/Off	Automatically starts recording when motion is detected in front of screen when set to: ON
Video Time	Off/1min/3min/5min 5min/10min	Sets file segment for video recording.
Voice Record	On/Off	Sets voice recording option.
Screen Saver	Off/1min/3min/5min	

SETUP MENU

Feature name	Selections	Description
Format (micro SD card)	Cancel, Execute	Formats SD memory card for DVR use.
Language	English/Spanish/ French/Italian/Chinese/ Chinese Simplified/ German/Japanese / Korean/Russian/ Portuguese/Arabic	Changes on-screen language.
Auto Off	Off/1min/3min/5min	Turns off DVR when not in use.
Sys. Reset	Cancel, Execute	Restore options to factory default.
Light Fequency	50Hz/60hz	Sets light frequency rate. 60Hz for North America.
Date Input	Year/Mo/Day - Time	Input current Date and Time.
USB Mode	PC Cam/Disk Drive	Sets mode when connecting to computer.
Version	Firmware number	Display current firmware for service or tech support.

STILL CAMERA MENU

Feature name	Selections	Description
Size	5M/3M/1.3M/VGA	Sets resolution for still camera images

DDVR2 RESETTING AND MENU CONT.

PLAYBACK MENU

Feature name	Selections	Description
Delete	One / All	Deletes individual or all files on SD memory card.
Lock/Unlock	Lock one, lock all, unlock one, unlock all	Locks or unlocks single or all files on SD memory card.
Thumbnail view	Cancel, Execute	Switches to thumbnail view of files on LCD screen.
Playback Volume	0-6	Adjust playback volume of video files.

FCC STATEMENT

This device complies with Part 15 of the FCC Rules. Operation is subject to the following two conditions: (1) this device may not cause harmful interference, and (2) this device must accept any interference received, including interference that may cause undesired operation.

LIMITED WARRANTY

Scosche Industries Inc. warrants this product to be free from defects in material and workmanship for a period of 1 year from purchase. This Scosche product is sold with the understanding that the purchaser has independently determined the suitability of this product. This warranty is offered to the original purchaser of the product only. This warranty does not cover the product if physically damaged, subject to negligence or misuse, abuse, alteration, accident, or an act of GOD. This warranty does not apply to product which has water or physically damaged by accident or which has been misused, disassembled or altered.

The original dated sales slip or proof of purchase will establish warranty eligibility. If the product should prove defective within the warranty period, return the product with proof of purchase to Scosche Industries Inc. Scosche, at its option, will replace or repair the product free of charge and return the product postage paid.

In no event shall Scosche Industries, Inc. be responsible for claims beyond the replacement value of the defective product, or in any way be liable or responsible for consequential or incidental damages. No express warranties and no implied warranties, for any particular use or otherwise, except as set forth above (which is made expressly in lieu of all other warranties) shall apply to products sold by Scosche.