

Register your product online at

[www.scosche.com/register](http://www.scosche.com/register)



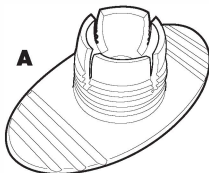
**SCOSCHE**

**MPDBASE-BP0**

## REPLACEMENT MOUNTING BASE FOR MAGICMOUNT™ PRO DASH

### PARTS INCLUDED

- A.** Low-profile adhesive mounting base  
**Note:** Replacement base for **MAGICMOUNT PRO DASH (MPD-BP0)** magnetic mount with threaded ball-joint assembly (magnetic mount and ball-joint tensioner collar not included).
- B.** Cleaning wipe



#### Questions?

Need help with your Product?

Call Customer Service at:

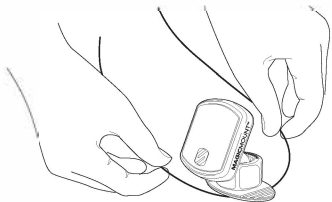
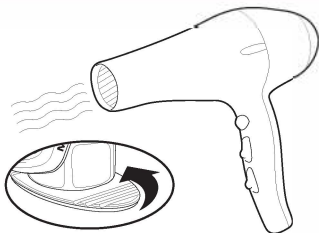
**(800) 363-4490 x1**



### REMOVING THE DASH MOUNT

#### OPTION 1

- Using a household hair-dryer, apply **LOW** heat to the base of the dash mount for 2-3 minutes. To avoid damage to the dash surface, make sure to hold the hair-dryer at least 6-9" away from the dash.
- Gently pull the dash mount away from the dash.
- Apply household adhesive remover (such as Goo-Off) for any remaining adhesive residue.

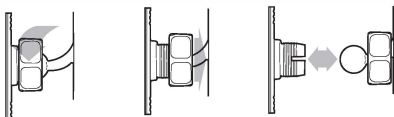


#### OPTION 2

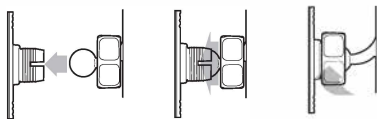
- Wrap dental floss behind the base.
- Gently pull the floss back and forth to slice through the adhesive layer, until the mount is detached from the dashboard.
- Apply household adhesive remover (such as Goo-Off) for any remaining adhesive residue.

## REPLACING THE MOUNTING BASE

1. Loosen and remove the tensioner collar from the ball/socket assembly and remove the ball end of the magnetic mount from the socket on the mounting base. **Note:** Do not remove the collar from around the ball end.



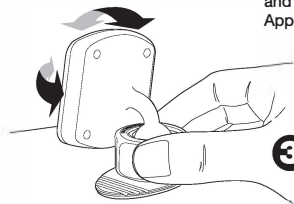
2. Place the ball end of the magnetic mount against the socket of the new mounting base. Thread the collar onto the base and retighten. **DO NOT OVERTIGHTEN.**



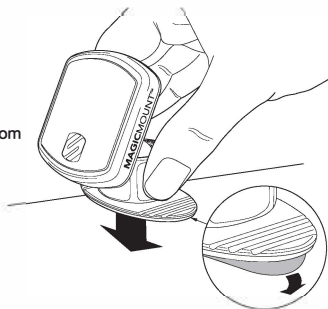
## INSTALLING THE DASH MOUNT



- 1 Clean the dash surface with supplied cleaning wipe\*. **\*Note:** Wipe may cause discoloration of certain plastics, vinyls and painted surfaces. It is recommended to test in an inconspicuous area first.



- 2 Peel the adhesive backing from the bottom of the mounting base, and place in position. Apply firm pressure.



- 3 Loosen, then re-tighten the base to adjust for optimum viewing angle.

For complete warranty details, please visit us at [www.scosche.com](http://www.scosche.com) or call (800) 363-4490